

THIS DRAWING IS UNPUBLISHED. RELEASED FOR PUBLICATION
 © COPYRIGHT BY TYCO ELECTRONICS CORPORATION. ALL RIGHTS RESERVED.

LOC	DIST	REVISIONS					
FT	0	P	LTR	DESCRIPTION	DATE	DWN	APVD
		R		REVISED PER 0G3B-0065-02	8/19/02	SS	GS

D

D

C

C

B

B

A

A

PIN #	LENGTH	STYLE	FREE DIA	(LH)	NUM LOUV	PLATING (NOTE)	MAT'L (NOTE)	MAT'L THK	REF		
[.062]		--	A	[.09]	[.016]	7	UNPL	12	0.12[.005]	05018	5-192044-0
[.062]		--	A	[.09]	[.016]	8	7-2	12	0.10[.004]	05069	4-192044-9
[.062]		--	A	[.09]	[.016]	8	UNPL	12	0.10[.004]	05107	4-192044-8
[.062]		--	A	[.09]	[.018]	7	4-2	12	0.10[.004]	05111	4-192044-7
[.062]		--	A	[.09]	[.018]	7	UNPL	12	0.10[.004]	05110	4-192044-6
[.047]		--	A	[.09]	[.016]	7	7-2	12	0.12[.005]	05006	4-192044-5
[.062]		--	A	[.09]	[.016]	6	3-2	12	0.12[.005]	05005	4-192044-4
[.040]		--	A	[.09]	[.015]	6	7-2	12	0.12[.005]	05004	4-192044-3
[.032]		--	A	[.06]	[.020]	4	UNPL	13	0.12[.005]	05041	4-192044-2
[.030]		--	A	[.06]	[.018]	4	3-2	12	0.12[.005]	05039	4-192044-1
[.030]		--	A	[.06]	[.018]	4	1-2	12	0.12[.005]	05033	4-192044-0
[.030]		--	A	[.06]	[.018]	4	UNPL	12	0.12[.005]	05030	3-192044-9
NOT AVAILABLE			C	--	[.027]	3	3-2	12	0.12[.005]	05003	3-192044-8
--		--	C	--	[.027]	73	1-2	14	0.10[.004]	05152	3-192044-7
--		--	C	--	[.027]	73	UNPL	14	0.10[.004]	05161	3-192044-6
--		--	C	--	[.022]	21	1-2	12	0.12[.005]	05169	3-192044-5
--		--	C	--	[.022]	21	UNPL	12	0.12[.005]	05168	3-192044-4
--		--	C	--	[.022]	17	UNPL	12	0.12[.005]	--	3-192044-3
--		--	C	--	[.022]	17	5-6	12	0.12[.005]	05127	3-192044-2
--		--	C	--	[.022]	13	1-2	12	0.12[.005]	05136	3-192044-1
--	15 [72]		C	--	[.022]	--	4-2	12	0.10[.004]	05116	3-192044-0
--	15 [144]		C	--	[.022]	--	UNPL	12	0.10[.004]	05117	2-192044-9
--	[72]		C	--	[.022]	--	1-2	12	0.10[.004]	05181	2-192044-8
SUPERSEDED BY 193792-2										05159	2-192044-7
SUPERSEDED BY 193792-1										05158	2-192044-6
--	NOTE 14		C	--	[.022]	--	3-2	12	0.15[.006]	05001	2-192044-5
--	NOTE 14		C	--	[.022]	--	UNPL	12	0.15[.006]	05150	2-192044-4
--	NOTE 14		C	--	[.018]	--	1-2	12	0.15[.006]	05000	2-192044-3
--	NOTE 14		C	--	[.018]	--	UNPL	12	0.15[.006]	05058	2-192044-2
--	NOTE 14		C	--	[.022]	--	3-2	12	0.12[.005]	05035	2-192044-1
SUPERSEDED BY 1-192044-9										05095	2-192044-0
--	NOTE 14		C	--	[.022]	--	1-2	12	0.12[.005]	05063	1-192044-9
--	NOTE 14		C	--	[.022]	--	UNPL	12	0.12[.005]	05037	1-192044-8
--	NOTE 14		C	--	[.018]	--	3-2	12	0.12[.005]	05036	1-192044-7
--	NOTE 14		C	--	[.018]	--	1-2	12	0.12[.005]	05080	1-192044-6
--	NOTE 14		C	--	[.018]	--	UNPL	12	0.12[.005]	05034	1-192044-5
--	NOTE 14		C	--	[.022]	--	UNPL	14	0.12[.005]	05139	1-192044-4
--	NOTE 14		C	--	[.022]	--	UNPL	14	0.10[.004]	05142	1-192044-3
NOT AVAILABLE											1-192044-2
NOT AVAILABLE											1-192044-1
NOT AVAILABLE											1-192044-0
NOT AVAILABLE											192044-9
NOT AVAILABLE											192044-8
NOT AVAILABLE											192044-7
NOT AVAILABLE											192044-6
NOT AVAILABLE											192044-5
NOT AVAILABLE											192044-4
NOT AVAILABLE											192044-3
NOT AVAILABLE											192044-2
NOT AVAILABLE											192044-1

1. FINISH-SILVER PLATE 200 |IN THICK MIN.
2. FINISH-NICKEL PLATE 40 |IN THICK MIN.
3. FINISH-GOLD PLATE 10 |IN THICK MIN.
4. FINISH-GOLD PLATE 20 |IN THICK MIN.
5. FINISH-GOLD PLATE 80 |IN THICK MIN.
6. FINISH-NICKEL PLATE 50 |IN THICK MIN.
7. FINISH-GOLD PLATE 50 |IN THICK MIN.
8. FINISH-NICKEL PLATE 100 |IN THICK MIN.
9. FINISH-TIN PLATE 200 |IN THICK MIN.
10. NOT USED.
11. PLATING NOTES ARE TO BE INTERPRETED AS FOLLOWS, 6-8 AS 6 OVER 8.
12. MATERIAL: CDA17200 BeCu.
13. MATERIAL-STAINLESS STEEL.
14. PRODUCT IS SOLD BY THE FOOT.

15 COIL TO 3 INCH INSIDE DIAMETER.

16. MATERIAL: CDA 17410 BeCu.

17 OBSOLETE PART NUMBER

18 MATERIAL CERTIFICATION REQUIRED.

192044

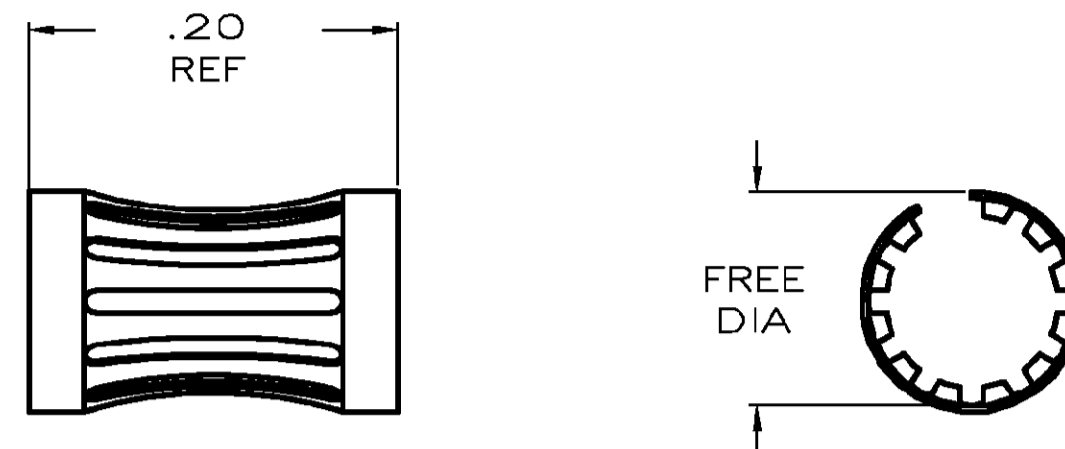
THIS DRAWING IS A CONTROLLED DOCUMENT.		DWN RA JAYNE 12-13/91	Tyco Electronics Corporation	
DIMENSIONS: INCHES		CHK J.TURNER 08-04-93	Harrisburg, PA 17105	
TOLERANCES UNLESS OTHERWISE SPECIFIED:		APVD S. SEGRIST 8/5/93	NAME CONTACT BAND,FEMALE	
0 PLC ± -		PRODUCT SPEC	-	
1 PLC ± -		APPLICATION SPEC	-	
2 PLC ± .02		WEIGHT	-	
3 PLC ± .010		SIZE	A2	
4 PLC ± -		CAGE CODE	00779	
ANGLES ± -		DRAWING NO	192044	
MATERIAL SEE TABLE	FINISH SEE TABLE	RESTRICTED TO	-	
CUSTOMER DRAWING		SCALE	NTS	
		SHEET	1 OF 2	
		REV	R	

THIS DRAWING IS UNPUBLISHED. RELEASED FOR PUBLICATION
 © COPYRIGHT BY TYCO ELECTRONICS CORPORATION. ALL RIGHTS RESERVED.

LOC	DIST	REVISIONS					
FT	0	P	LTR	DESCRIPTION	DATE	DWN	APVD
		R		SEE SHEET ONE	-	-	-

D

D

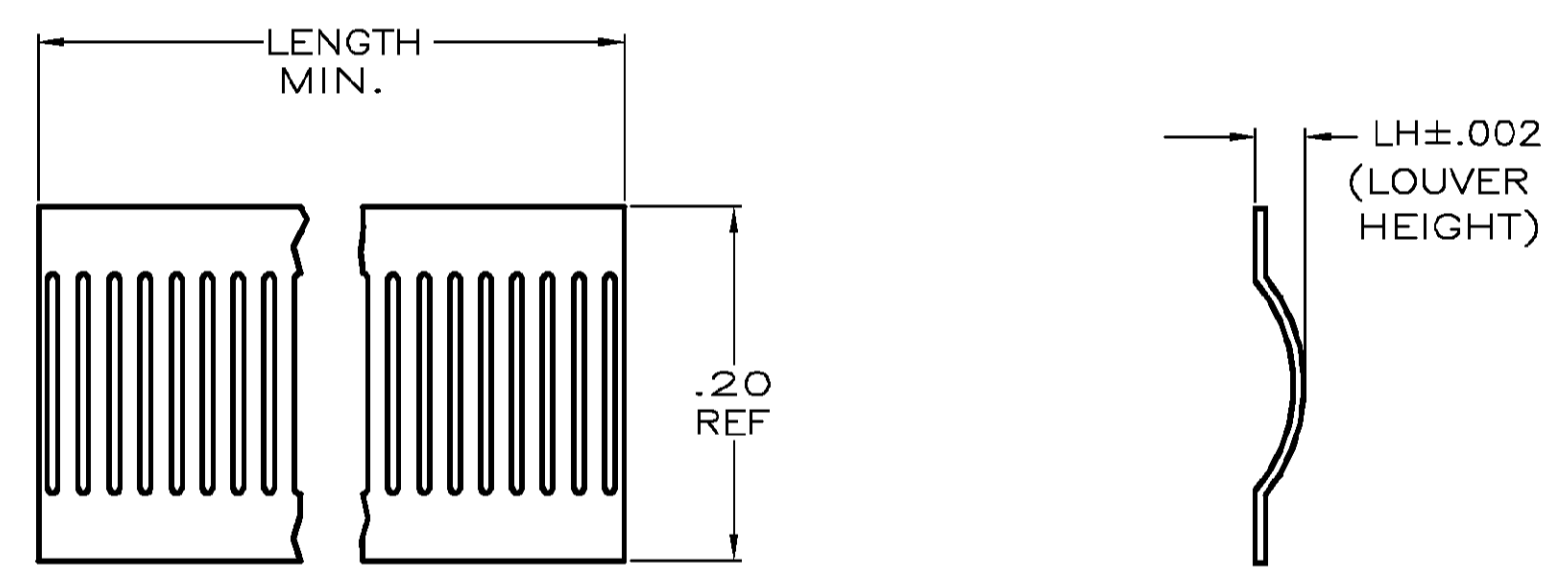


STYLE A
(FEMALE)

C

C

[.20]	[.022]	A	--	[.157]	18	3-2	12	0.12	[.005]	05013	9-192044-9
[.20]	[.022]	A	--	[.157]	18	1-2	12	0.12	[.005]	05130	9-192044-8
[.20]	[.022]	A	--	[.157]	18	UNPL	12	0.12	[.005]	05131	9-192044-7
[.20]	[.018]	A	--	[.152]	16	7-2	12	0.15	[.006]	05012	9-192044-6
[.20]	[.018]	A	--	[.150]	16	7-2	12	0.12	[.005]	05011	9-192044-5
[.19]	[.018]	A	--	[.143]	17	3-2	12	0.12	[.005]	05098	9-192044-4
[.19]	[.018]	A	--	[.143]	17	1-2	12	0.12	[.005]	05188	9-192044-3
[.19]	[.018]	A	--	[.143]	17	UNPL	12	0.12	[.005]	05153	9-192044-2
[.16]	[.015]	--	--	[.125]	14	3-2	12	0.15	[.006]	05010	9-192044-1
[.16]	[.015]	--	--	[.125]	14	1-2	12	0.15	[.006]	05057	9-192044-0
[.15]	[.015]	A	--	[.125]	14	UNPL	12	0.15	[.006]	05154	8-192044-9
[.15]	[.015]	A	--	[.125]	13	UNPL	12	0.15	[.006]	05047	8-192044-8
[.15]	[.022]	A	--	[.125]	13	UNPL	13	0.12	[.005]	05026	8-192044-7
SUPERSEDED BY 193670-4										05183	8-192044-6
[.16]	[.015]	A	--	[.125]	14	7-2	12	0.12	[.005]	05109	8-192044-5
[.16]	[.015]	A	--	[.125]	14	3-2	12	0.12	[.005]	05060	8-192044-4
[.16]	[.015]	A	--	[.125]	14	1-2	12	0.12	[.005]	05061	8-192044-3
[.16]	[.015]	A	--	[.125]	14	UNPL	12	0.12	[.005]	05062	8-192044-2
[.16]	[.018]	A	--	[.125]	14	4-2	12	0.10	[.004]	05132	8-192044-1
[.16]	[.018]	A	--	[.125]	14	8	12	0.10	[.004]	05149	8-192044-0
[.16]	[.018]	A	--	[.125]	14	UNPL	12	0.10	[.004]	05070	7-192044-9
SUPERSEDED BY 7-192044-9										05068	7-192044-8
[.20]	[.018]	A	--	[.125]	14	UNPL	12	0.07	[.003]	05079	7-192044-7
SUPERSEDED BY 8-192044-4										--	7-192044-6
[.06]	[.022]	A	--	[.030]	4	3-2	12	0.10	[.004]	05009	7-192044-5
[.06]	[.022]	A	--	[.030]	4	UNPL	12	0.10	[.004]	05008	7-192044-4
[.13]	[.018]	A	--	[.094]	11	UNPL	12	0.15	[.006]	05053	7-192044-3
[.14]	[.016]	A	--	[.093]	12	3-2	12	0.12	[.005]	05126	7-192044-2
[.14]	[.016]	A	--	[.093]	12	3-2	12	0.12	[.005]	05160	7-192044-1
[.14]	[.016]	A	--	[.093]	12	1-2	12	0.12	[.005]	05128	7-192044-0
[.14]	[.016]	A	--	[.093]	12	UNPL	12	0.12	[.005]	05125	6-192044-9
[.12]	[.022]	A	--	[.080]	10	8	12	0.20	[.008]	05173	6-192044-8
[.12]	[.022]	A	--	[.080]	10	7-2	12	0.20	[.008]	05124	6-192044-7
[.12]	[.022]	A	--	[.080]	10	3-2	12	0.20	[.008]	05007	6-192044-6
[.12]	[.022]	A	--	[.080]	10	UNPL	12	0.20	[.008]	05044	6-192044-5
[.12]	[.021]	A	--	[.080]	9	3-2	12	0.12	[.005]	05179	6-192044-4
[.12]	[.021]	A	--	[.080]	9	UNPL	12	0.12	[.005]	05180	6-192044-3
[.12]	[.018]	A	--	[.080]	9	7-2	12	0.10	[.004]	05172	6-192044-2
[.12]	[.018]	A	--	[.080]	9	4-2	12	0.10	[.004]	05112	6-192044-1
[.12]	[.018]	A	--	[.080]	9	1-2	12	0.10	[.004]	05118	6-192044-0
[.12]	[.018]	A	--	[.080]	9	UNPL	12	0.10	[.004]	05108	5-192044-9
[.09]	[.020]	A	--	[.065]	8	UNPL	13	0.12	[.005]	05031	5-192044-8
[.09]	[.020]	A	--	[.062]	7	UNPL	13	0.12	[.005]	05023	5-192044-7
[.09]	[.015]	A	--	[.062]	8	3-2	12	0.12	[.005]	05042	5-192044-6
[.09]	[.015]	A	--	[.062]	8	1-2	12	0.12	[.005]	05059	5-192044-5
[.09]	[.015]	A	--	[.062]	8	--	12	0.12	[.005]	05056	5-192044-4
[.09]	[.015]	A	--	[.062]	8	UNPL	12	0.12	[.005]	05104	5-192044-3
[.09]	[.016]	A	--	[.062]	8	UNPL	12	0.12	[.005]	05105	5-192044-2
[.09]	[.016]	A	--	[.062]	7	6-2	12	0.12	[.005]	05106	5-192044-1
FREE DIA	(LH)	STYLE	LENGTH	MATING	NUM LOUV	PLATING (NOTE)	MAT'L (NOTE)	MAT'L THK	REF	PART NO.	



STYLE C
(STRIP)

B

B

A

A

THIS DRAWING IS A CONTROLLED DOCUMENT.		DWN	RA JAYNE	12/13/91		Tyco Electronics Corporation		
		CHK	J TURNER	08-04-93		Harrisburg, PA 17105		
DIMENSIONS: INCHES		TOLERANCES UNLESS OTHERWISE SPECIFIED:		APVD	S SEIGRIST	8/5/93	NAME	
				PRODUCT SPEC	CONTACT BAND, FEMALE			
				APPLICATION SPEC				
MATERIAL		FINISH		WEIGHT	SIZE	CAGE CODE	DRAWING NO	RESTRICTED TO
SEE TABLE		SEE TABLE			A2	00779	C-192044	
CUSTOMER DRAWING				SCALE	1:1	SHEET	2 OF 2	REV
								R

192044